

CULTURE
CREATIVE

STORY TRAILS

INDOOR EXPERIENCES

CINDERELLA

Reimagined by BAFTA award-winning designer Clare Elliott, who heads up the design team at Culture Creative. Clare's take on this wonderful fairy tale includes a full-size carriage, a glass slipper and a trail of tiny mice for children to find as they follow the trail.

Visitors journey through each room to discover each chapter in this well known tale. From the wicked stepmother, to the ugly sisters, to the prince himself, each character is brought to life in the magical retelling of this story.

The show works best across multiple spaces and can be tailored to fit different sizes of rooms. The story can always be told in multiple ways and the use of all props is flexible. Each room/space is programmed with its own enchanting soundscape and immersive set design. We recommend hiring a professional actor to play the part of Cinderella.

Cinderella is available to hire from early 2026.

CINDERELLA





ALICE IN WONDERLAND

Reimagined by BAFTA award-winning designer Clare Elliott, who heads up the design team at Culture Creative. Clare's take on Alice's adventure through the looking glass was first presented at Blenheim Palace in 2019.

In this magical world visitors journey down the rabbit-hole corridor, through the Hall of Mirrors, and along the Hall of Doors where they see the White Rabbit in his sitting room, the Caterpillar's garden home filled with massive mushrooms, a Cheshire Cat, and a Pool of Tears where nothing is quite as it seems...

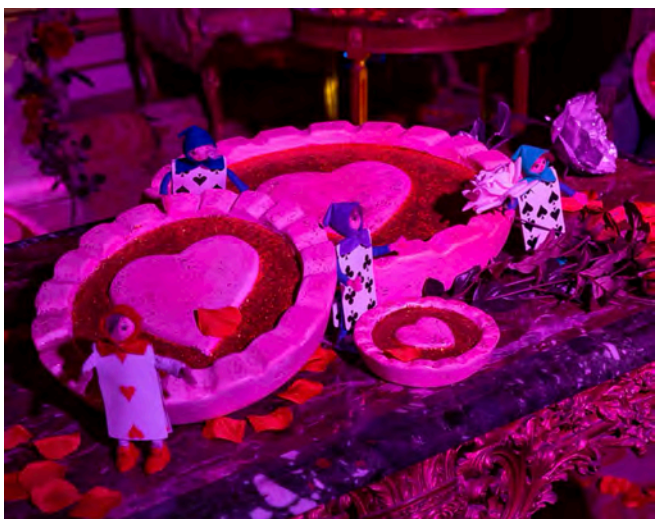
There is also a magnificent Mad Hatter's Tea Party, the Queen of Hearts surrounded by pink flamingos, rambling roses and hedgehogs, and a Wonderland-themed dressing-up-area where children and families can take on the roles of Alice, the Queen of Hearts, and the White Rabbit itself.

The show works best across multiple spaces and can be tailored to fit different sizes of rooms. The story can always be told in multiple ways and the use of all props is flexible. Each room/space is programmed with its own enchanting soundscape and immersive set design. We recommend hiring a professional actor to play the part of Alice.

Alice in Wonderland is available to hire from early 2026.

ALICE IN WONDERLAND





THE NUTCRACKER

Reimagined by BAFTA award-winning designer Clare Elliott, who heads up the design team at Culture Creative. Clare's take on this 19th century short story by Hoffmann which was the inspiration for Tchaikovsky's hugely popular ballet is truly enchanting.

Visitors journey through each room to discover the Toymaker's Workshop on a frosty Christmas Eve, the glistening Land of Snow, and a candy-cane Kingdom of Sweets adorned with the sweetest of treats and larger-than-life gingerbread men. Nothing is quite as it seems in this fairy-tale world...

The show works best across multiple spaces and can be tailored to fit different sizes of rooms. The story can always be told in multiple ways and the use of all props is flexible. Each room/space is programmed with its own enchanting soundscape and immersive set design. We recommend hiring a professional actor to play the part of the Sugar Plum Fairy, The Nutcracker, or both.

The Nutcracker is available to hire from early 2026.

Read more about how the Story of The Nutcracker is created by our design team based in the North East of England in the [NORTHUMBERLAND GAZETTE - CLICK HERE](#)

THE NUTCRACKER





SLEEPING BEAUTY

Reimagined by BAFTA award-winning designer Clare Elliott, who heads up the design team at Culture Creative. Clare's take on this classic fairy tale has all the magic of the original, but is told with a contemporary twist where the Lilac Fairy reverses the Evil Fairy's spell and magic saves the day.

Sleeping Beauty was first created for Blenheim Palace in 2023. The story begins in the candle-lit bedchamber where the Lilac Fairy watches over Sleeping Beauty. Visitors follow the story through the Evil Fairy's dark lair filled with toads, potions and menacing crows, then on to the busy castle kitchen frozen in time. Looking for a happy-ever-after, the Lilac Fairy helps True Love to find a way through the woods, and together they reawaken the castle after 100 very sleepy years.

The show works best across multiple spaces and can be tailored to fit different sizes of rooms. The story can always be told in multiple ways and the use of all props is flexible. Each room/space is programmed with its own enchanting soundscape and immersive set design. We recommend hiring a professional actor to play the part of Aurora, the Sleeping Beauty.

Sleeping Beauty is available to hire from early 2026.

"The rooms in the palace had been transformed to retell the classic fairytale for a new generation. It was magical. Each room telling a different chapter in the story of Aurora and every inch exquisitely transformed, from the Great Hall filled by an amazing Christmas tree to the candle-lit bedchamber where the beauty slept. Pure magic!" COTSWOLDS CONCIERGE

"Each room tells a different chapter of the story and it is mesmerising, from the characters to the decorations. There's spinning wheels, fairies, a spooky wooded lair, and a castle frozen in time. We all enjoyed spotting the little details throughout the trail including how many mice were in certain rooms." BIRMINGHAM LIVE

SLEEPING BEAUTY





THE SNOW QUEEN

Reimagined by BAFTA award-winning designer Clare Elliott, who heads up the design team at Culture Creative. Clare's take on Hans Christian Andersen's story of The Snow Queen is timeless.

The Snow Queen was first created for Blenheim Palace, but has since toured to Wentworth Woodhouse in Rotherham and is available to hire from early 2026.

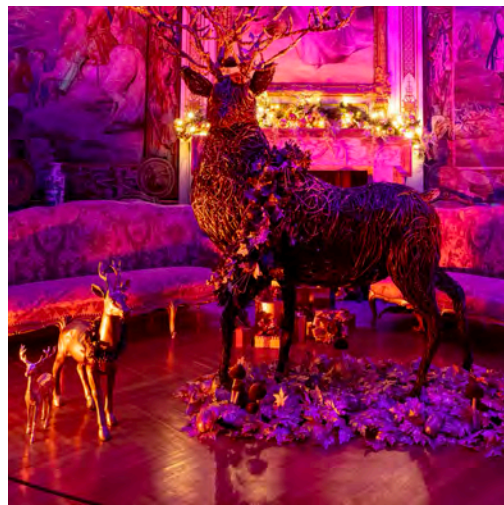
Visitors follow Gerda's journey to rescue her friend Kay, moving through sets of enchanted gardens and princely chambers, to darker robber's dens and, finally, the icy palace of The Snow Queen herself.

The show works best across multiple spaces and can be tailored to fit different sizes of rooms. Some of the props require high ceilings (the ice queen's throne), but the story can always be told in multiple ways and the use of all props is flexible. Each room/space is programmed with its own enchanting soundscape and immersive set design. We recommend hiring a professional actor to play the part of The Snow Queen.

Watch [Christmas at Blenheim Palace](#) with Channel 4's on demand (first shown on 8 Dec 2022)

THE SNOW MONSIEUR





NEVERLAND

... second to the right and straight on till morning!

Reimagined by BAFTA award-winning designer Clare Elliott, who heads up the design team at Culture Creative. Clare's take on JM Barrie's timeless tale of Peter Pan is breath-taking.

JM Barrie gifted the rights to Peter Pan to Great Ormond Street Hospital in 1929 and this trail is created under licence to GOSH Charity.

Visitors follow Tinkerbell trail of fairy dust through a moonlit London skyline and on to the Mermaid Lagoon, Skull Rock, Crocodile Creek, and the Lost Boy's Island where they encounter the infamous Captain Hook on board a pirate ship.

The show works best across multiple spaces and can be tailored to fit different sizes of rooms. Some of the props require high ceilings (pirate ship), but the story can always be told in multiple ways and the use of all props is flexible. Each room/space is programmed with its own enchanting soundscape and immersive set design. We recommend hiring a professional actor to play the part of Captain Hook.

NEVERLAND (indoors) is available to hire from early 2026. For information on our NEVERLAND outdoor trail please get in touch.

"There's no mistaking the Peter Pan theme within, but the attention to detail and the incredible visual illusions took our breath away, the ambition and scope unrivalled. From pirate ships, mermaids and ticking crocs, to Captain Hook and Tinkerbell, the mesmerising tour leaves you open-mouthed."

OX IN A BOX

NEVERLAND





THE WIZARD OF OZ

Reimagined by BAFTA award-winning designer Clare Elliott, who heads up the design team at Culture Creative. Clare's take on the story of The Wizard of Oz leads visitors on an immersive journey into the heart of Baum's fantastical world.

Visitors follow a road of yellow bricks, encounter a seven-metre cyclone, a six-foot Tin Woodsman, a talking scarecrow, Glinda the Good Witch, a cowardly lion sleeping in a field of poppies, flying monkeys, and the Wizard himself, all brought magically to life with theatrical precision.

The show works best across multiple spaces and can be tailored to fit different sizes of rooms. Some of the props require high ceilings (tornado and the hot air balloon), but the story can always be told in different ways and the use of props is flexible.

Each room/space is programmed with its own enchanting soundscape and immersive set design. We recommend hiring a professional actor to play the part of Dorothy.

The Wizard of Oz is available to hire from early 2026.

"...undeniably one of the most magical experiences you can find in the UK this Christmas."

SECRET BIRMINGHAM

THE WIZARD OF OZ







**CULTURE
CREATIVE**